

Press release

Analysis of Microscopic Images

EfficientBioAI: New Open-Source Software Makes AI Models Lighter and Greener

Dortmund, January 24th 2024. Artificial intelligence (AI) has become an indispensable component in the analysis of microscopic data. However, while AI models are becoming better and more complex, the computing power and associated energy consumption are also increasing. Researchers at the Leibniz-Institut für Analytische Wissenschaften (ISAS) and Peking University have therefore created a free compression software that allows scientists to run existing bioimaging AI models faster and with significantly lower energy consumption. The researchers have now presented their user-friendly toolbox called [EfficientBioAI](#) (open source) in [Nature Methods](#).

Modern microscopy techniques produce a large number of high-resolution images, and individual data sets can comprise thousands of them. Scientists often use AI-supported software to reliably analyse these data sets. However, as AI models become more complex, the latency (processing time) for images can significantly increase. “High network latency, for example with particularly large images, leads to higher computing power and ultimately to increased energy consumption”, says Dr Jianxu Chen, head of the AMBIOM - Analysis of Microscopic BIOMedical Images junior research group at ISAS.

A well-known technique finds new applications

To avoid high latency in image analysis, especially on devices with restricted computing power, researchers use sophisticated algorithms to compress the AI models. This means they reduce the amount of computations in the models while retaining comparable prediction accuracy. “Model compression is a technique that is widely used in the field of digital image processing, known as computer vision, and AI to make models lighter and greener,” explains Chen. Researchers combine various strategies to reduce memory consumption, speed up model inference, the ‘thought process’ of the model - and thus save energy. Pruning, for example, is used to remove excess nodes from the neural network. “These techniques are often still unknown in the bioimaging community. Therefore, we wanted to develop a ready-to-use and simple solution to apply them to common AI tools in bioimaging”, says Yu Zhou, the paper’s first author and PhD student at AMBIOM.

Energy savings of up to roughly 81 per cent

To put their new toolbox to the test, the researchers led by Chen tested their software on several real-life applications. With different hardware and various bioimaging analysis tasks, the compression techniques were able to significantly reduce latency and cut energy consumption by between 12.5 and 80.6 per cent. “Our tests show that EfficientBioAI can significantly increase the efficiency of neural networks in bioimaging without limiting the accuracy of the models”, summarises Chen. He illustrates the energy

ISAS press office

Bunsen-Kirchhoff-Str. 11
44139 Dortmund

www.isas.de/presse

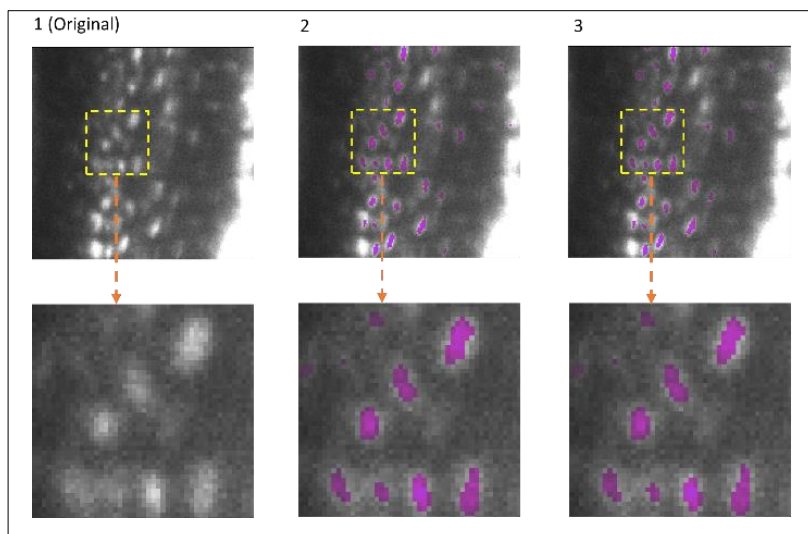
Sara Rebein

T: +49 (0)2 31.13 92-234
E: sara.rebein@isas.de

Cheyenne Peters

T: +49 (0)2 31.13 92-1087
E: cheyenne.peters@isas.de

savings using the commonly used CellPose model as an example: if a thousand users were to use the toolbox to compress the model and apply it to the [Jump Target ORF dataset](#) (around one million microscope images of cells) they could save energy equivalent to the emissions of a car journey of around 7,300 miles (approx. 11,750 kilometres).



The adaptability of EfficientBioAI was tested using several applications. One example is the 3D semantic segmentation. The AI model identifies specific structures within a three-dimensional cellular environment. The illustration shows the segmentation of osteocytes (mature bone cells) in images of mouse bones. The images were taken using light sheet fluorescence microscopy. The figure shows the original image (column 1), the segmentation by the FNet 3D model (column 2) from the [MMV_Im2Im toolbox](#) for image-to-image transformation, and the segmentation after compression of FNet 3D by EfficientBioAI (column 3). The comparison (columns 2 and 3) shows that compression does not reduce the accuracy of the segmentation at all. Photo: ISAS / Anika Grüneboom. The image is available for download in high resolution at <https://www.isas.de/en/press-office/archive/efficientbioai-makes-ai-models-lighter-and-greener>.

No special knowledge required

The authors are keen to make EfficientBioAI accessible to as many scientists in biomedical research as possible. Researchers can install the software and seamlessly integrate it into existing PyTorch libraries (open-source programme library for the Python programming language). For some widely used models, such as Cellpose, researchers can therefore use the software without having to make any changes to the code themselves. To support specific change requests, the group also provides several demos and tutorials. With just a few changed lines of code, the toolbox can then also be applied to customised AI models.

About EfficientBioAI

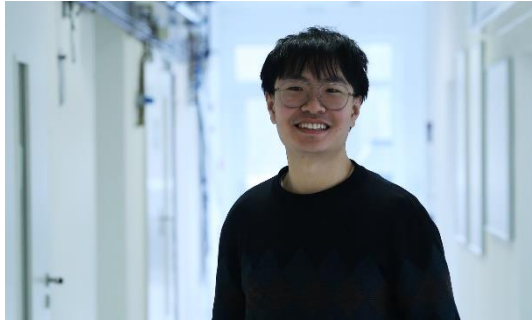
EfficientBioAI is a ready-to-use and open-source compression software for AI models in the field of bioimaging. The plug-and-play toolbox is kept simple for standard use, but offers customisable functions. These include adjustable compression levels and effortless switching between the central processing unit (CPU) and graphics processing unit (GPU). The researchers are constantly developing the toolbox and are already working on making it available for MacOS in addition to Linux (Ubuntu 20.04, Debian 10) and Windows 10. At present, the focus of the toolbox is on improving the inference efficiency of pre-trained models rather than increasing efficiency during the training phase. However, the researchers are continuously developing and expanding the toolbox.

EfficientBioAI is available at GitHub at <https://github.com/MMV-Lab/EfficientBioAI>.

To the publication in *Nature Methods*:

<https://www.nature.com/articles/s41592-024-02167-z>

The MSCoreSys associated junior research group AMBIOM – Analysis of Microscopic BiOMedical Images is funded by the Federal Ministry of Education and Research (Bundesministerium für Bildung und Forschung, BMBF) under the funding reference 161L0272.



Left: Dr Jianxu Chen is head of the ISAS Junior Research Group AMBIOM – Analysis of Microscopic BiOMedical Images. Photo: ISAS / Woidich.

Right: Yu Zhou has been a PhD student in the junior research group AMBIOM – Analysis of Microscopic BiOMedical Images at ISAS since September 2022. He previously studied biomedical engineering in Sweden, China and Switzerland. Photo: ISAS.

Download of both portraits (high resolution) via <https://www.isas.de/en/press-office/archive/efficientbioai-makes-ai-models-lighter-and-greener>.

About ISAS

ISAS develops efficient analytical methods for health research. Thus, it contributes to the improvement of the prevention, early diagnosis, and therapy of diseases like cardiovascular diseases, autoimmune diseases or cancer. Overall, the institute strives to advance precision medicine by combining knowledge from different fields such as biology, chemistry, pharmacology, physics, and computer science. ISAS works closely with universities in Germany and abroad, for example through joint appointments. It also cooperates with national and international partners from science and industry. ISAS was founded in 1952 and has about 160 employees from 16 nations.